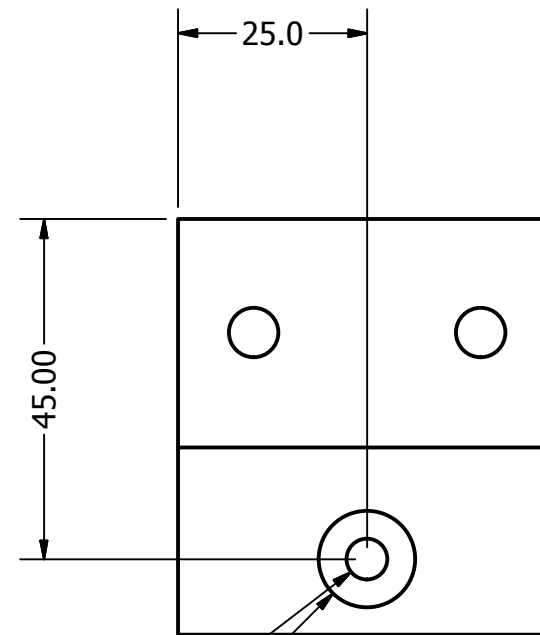
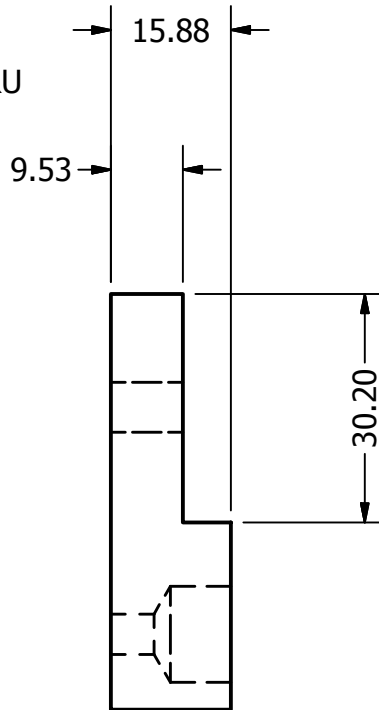
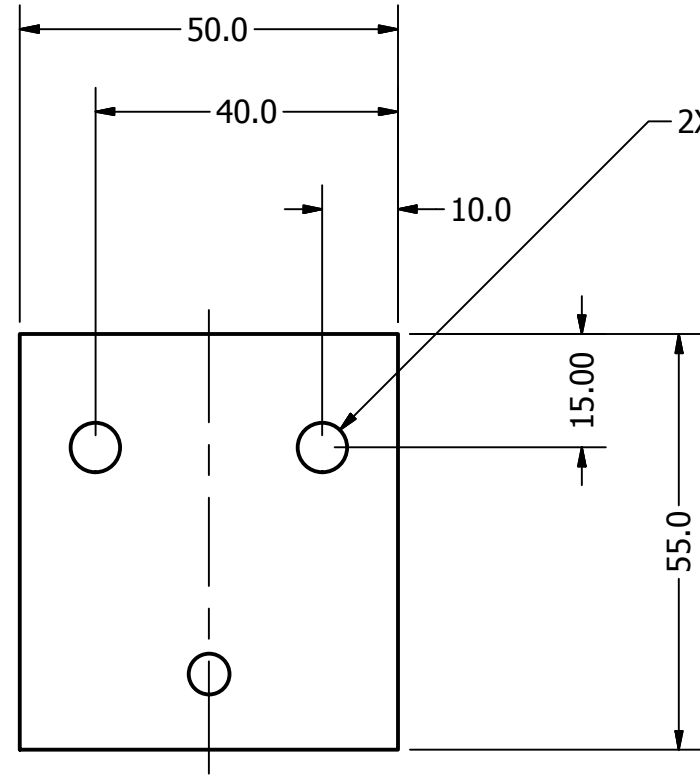


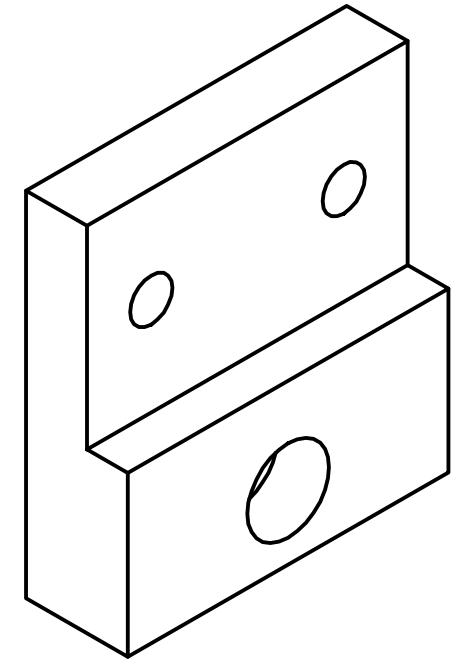
NOTES:

1. MATERIAL: ALUMINUM (ANY 6--- OR 7--- SERIES)
2. ASSOCIATED CAD FILE: StageCenterBallPlate.STP
3. BREAK SHARP EDGES
4. QUANTITY: 1



$\varnothing 12.710^{+.02}_{-.00} \nabla 8.00$

(SLIP FIT FOR 1/2 ± .0001in BALL)



ENGINEER
Justine Haupt 9/23/2018

ALL UNITS IN mm

DECIMAL TOLERANCES:

- X = ±.50
- X.X = ±.30
- X.XX = ±.16
- X.XXX = ±.08

TITLE

STAGE CENTER BALL PLATE

SIZE

B

PROJECT

DWG NO

LFPSCBP

REV

0